

**Honest Weight Food Cooperative
Organizational Chart - October 2004
Management & Committee Structure**

Working Members ~500
Vote
Work at/for store in non-management positions/committees

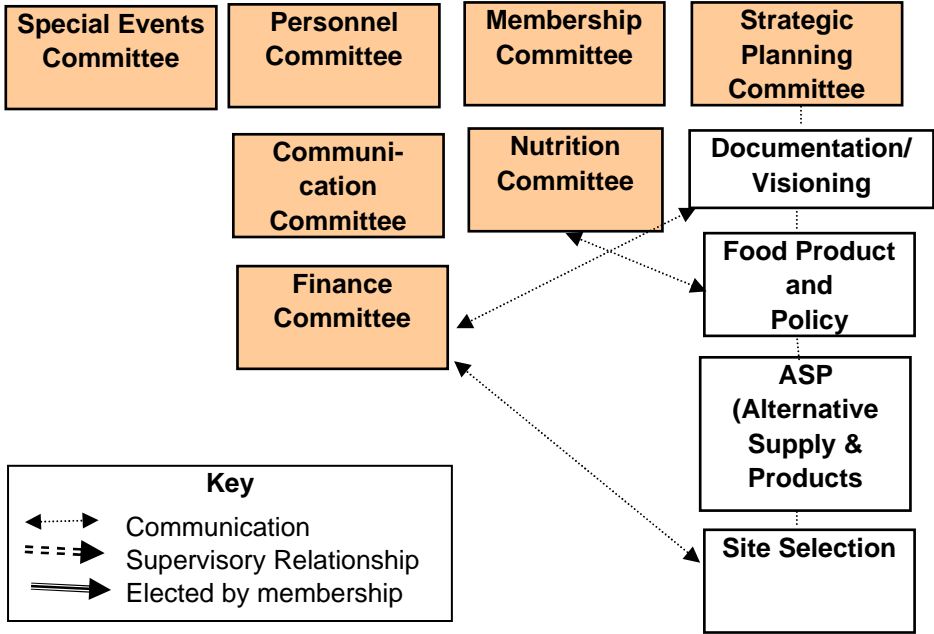
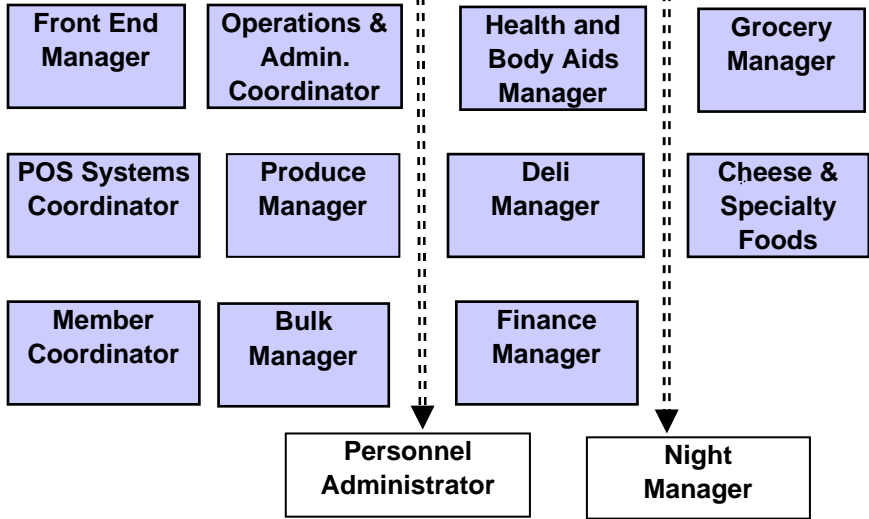
Governance Committee

Shareholders - ~3000
No voting privileges
May become working members any time by completing work requirements.

Board of Directors
nine seats, elected by above
policy making, fiscal oversight

Committees of the Board
Six to nine committees that inform board decisions. Made up of Board, Staff and working members. Ideally, balanced representation.

Collective Management Team (CMT)



Key

- ←····→ Communication
- ===→ Supervisory Relationship
- ====→ Elected by membership